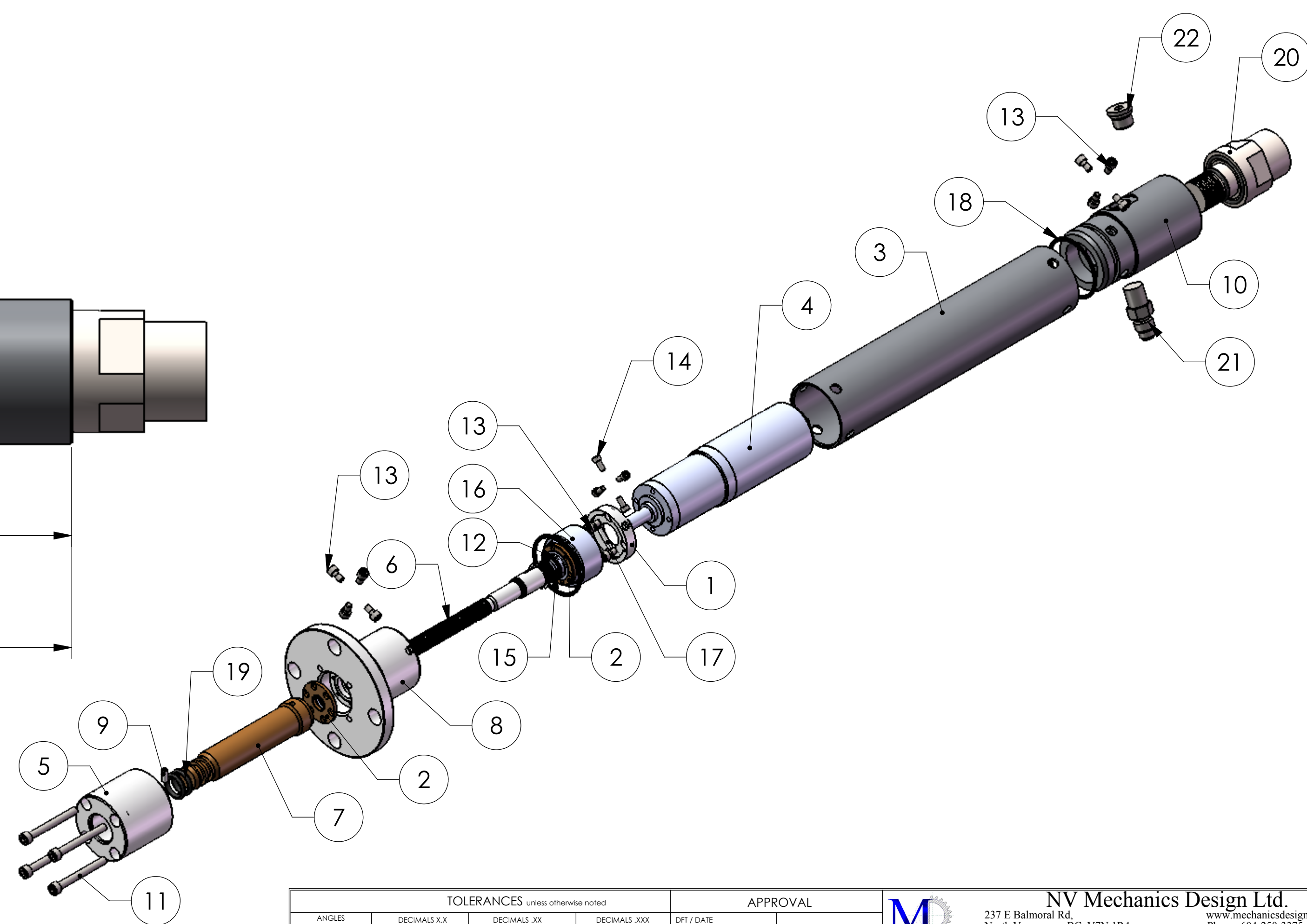
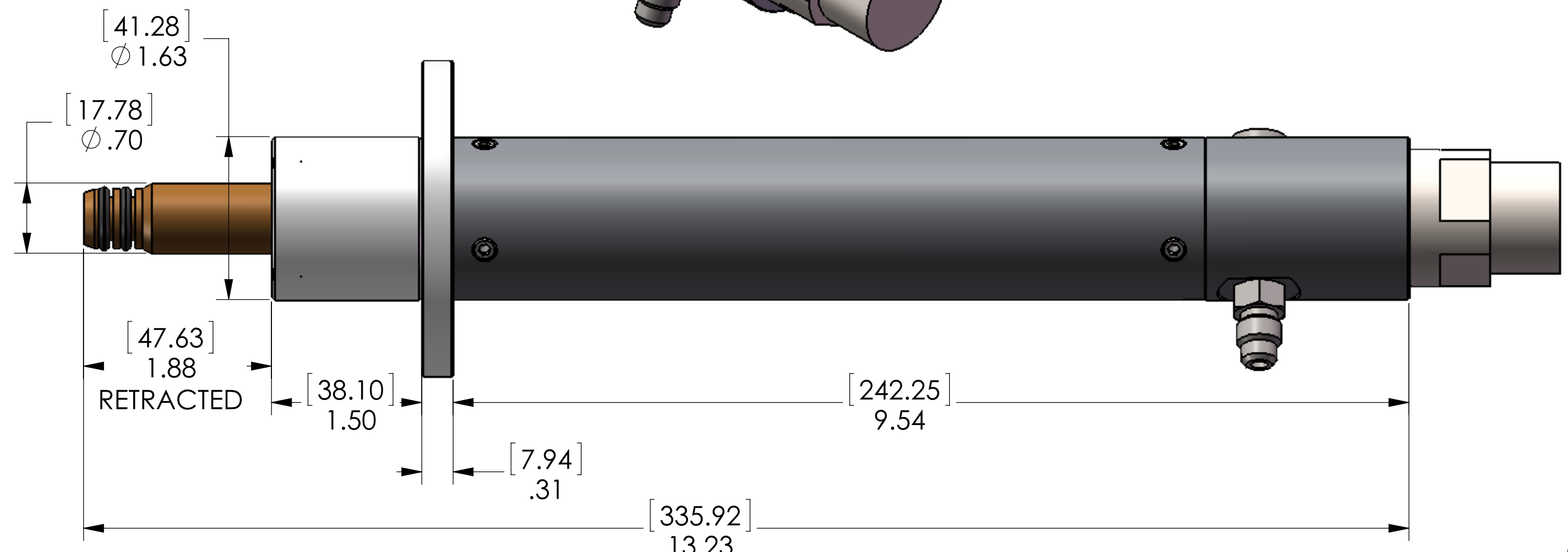
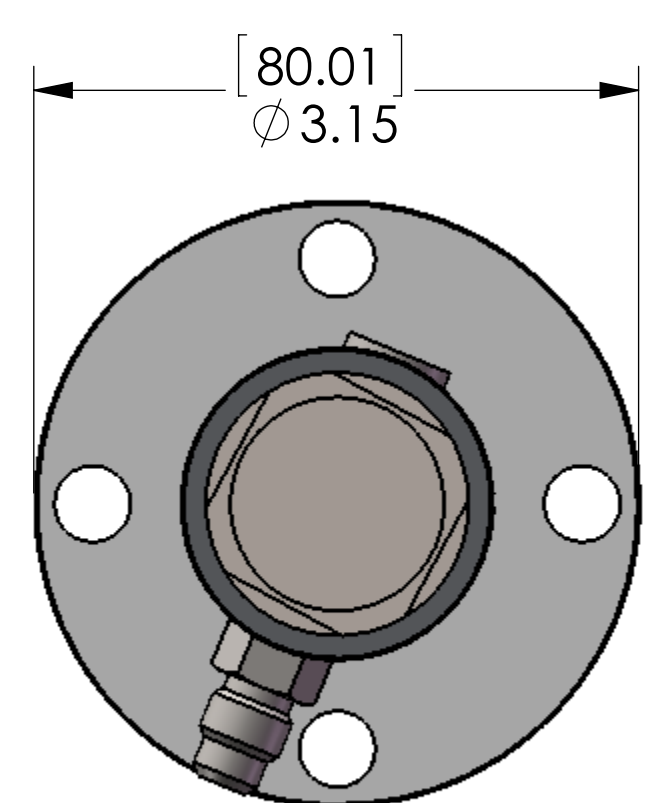
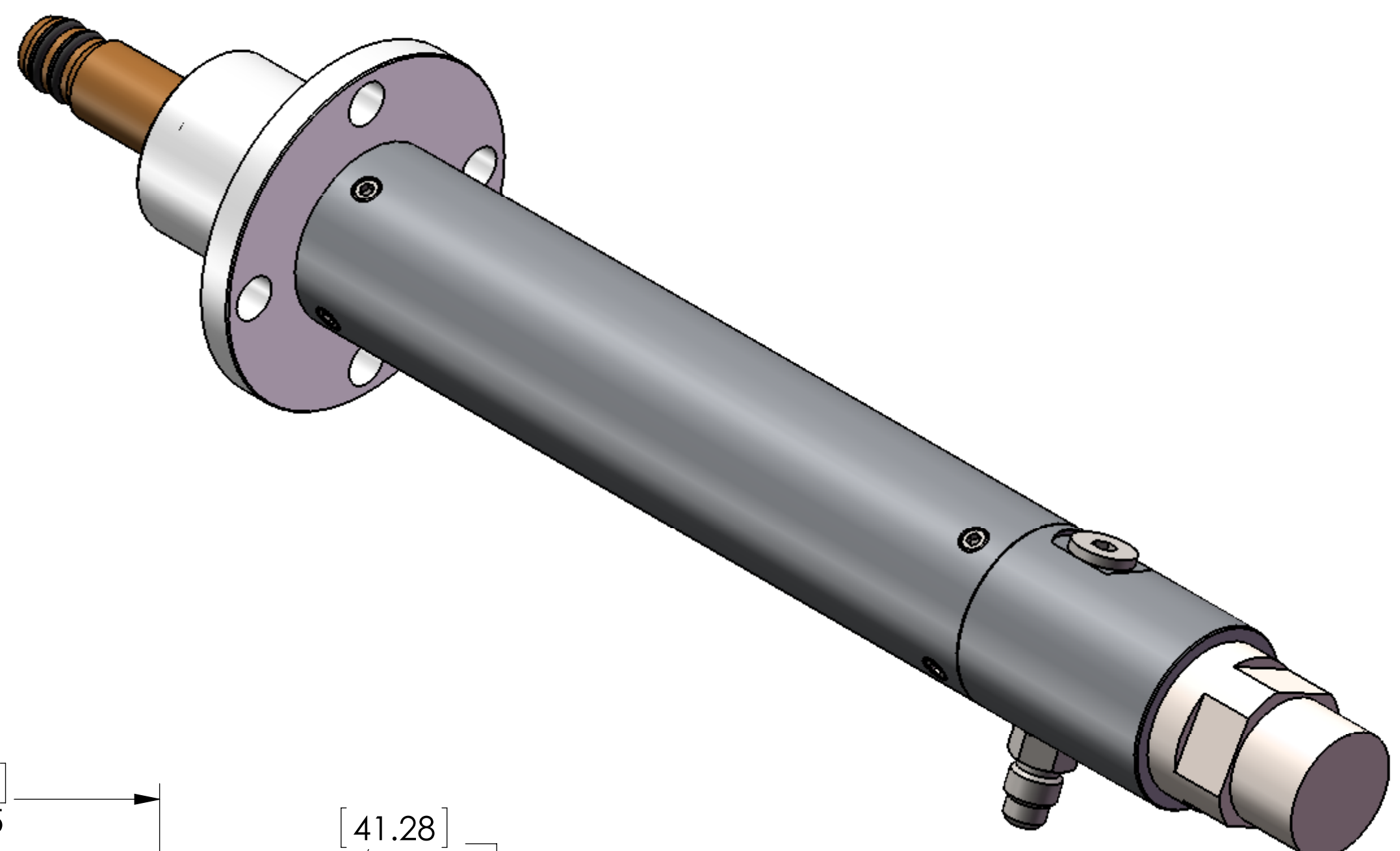


ROTARY ACCTUATOR	
MOTOR TYPE	BRUSH MOTOR
NOMINAL VOLTAGE	30 VDC
NOMINAL TORQUE (MAX CONTINUOUS TORQUE)	4.6 ft. lbf [6.2 Nm]
MAX CONTINUOUS CURRENT	2.9 A
MAX OUTPUT SHAFT STROKE/SPEED	AVAILABLE UPON REQUEST
DIAMETER	1.63 IN OR 41.3 mm
LENGTH	13.2 IN OR 336 mm
STROKE	1.25 IN OR 41.3 mm
CONNECTOR	SEACON EEXD (MSS)

BILL OF MATERIALS				DESCRIPTION	MATERIAL DESCRIPTION	Vendor
ITEM #	QTY	UOM	PART NUMBER			
1	1	EA	MDM-SR10-UM1002-0	MOSTOR MOUNT PLATE	17-4 PH SST H1150	
2	2	EA	MDM-SR10-UM1004-2	UNDERWATER MOTOR	ALUMINUM BRONZE	
3	1	EA	MDM-SR10-UM1005-1	TUBE	DUPLEX SST	
5	1	EA	MD-LAC12-10010-0	ACTUATOR ADAPTOR	DUPLEX SST	
6	1	EA	MD-LAC12-10011-0	SHAFT	DUPLEX SST	
7	1	EA	MD-LAC12-10012-0	PLUG	AL BRONZE	
8	1	EA	MD-LAC12-10013-0	FRONT END CAP	DUPLEX SST	
9	2	EA	MD-LAC12-10014-0	PIN	17-4PH SST H1150	
10	1	EA	MD-LAC12-10015-0	REAR END CAP	DUPLEX SST	
17	1	EA	MD-LAC12-10017-0	PIN	17-4PH SST H1150	



- NOTES:
1. MATERIAL CERTIFICATION REQUIRED
  2. UOS DIMENSION TOLERANCES PER TABLE
  3. UOS BREAK ALL SHARP EDGES .03".
  4. UOS FILLET RADII .015" MAX.
  5. UOS SURFACE QUALITY 63 μ in
  6. ALUMINUM PARTS TO BE HARD ANODIZE, PER MIL-A-8625, TYPE III, CLASS 1, COLOR TBD

REVISIONS				
ZONE	REV.	DESCRIPTION	DATE	APPROVED

TOLERANCES unless otherwise noted				APPROVAL	
ANGLES ±0.3°	DECIMALS .XX ±.1	DECIMALS .XXX ±.010	DECIMALS .XXXX ±.005	DRF / DATE PPR 11/12/2012	CHK / DATE
Unless otherwise noted, all dimensions are in inches. DO NOT SCALE. Work to dimensions shown.				APPRD / DATE	
INTERPRET PER ANSI Y14.3 AND ANSI Y14.5M		DWG FILE NAME MD-LAC12-11000-0.SLDDRW			
This document contains confidential information. All rights are owned by NV Mechanics Design Ltd. No use or disclosure is to be made without the written permission of NV Mechanics Design Ltd.					

**NV Mechanics Design Ltd.**  
 237 E Balmoral Rd.  
 North Vancouver, BC, V7N 1R4  
 e-mail: sales@mechanicsdesign.com  
 Phone: 604-250-3375  
 Fax: 604-525-5570

**LINEAR ACTUATOR ASSEMBLY LAC12**

SIZE: D  
 DWG. NO.: MD-LAC12-11000-0  
 WEIGHT: 5.37 LBS  
 SHEET: 1 OF 1