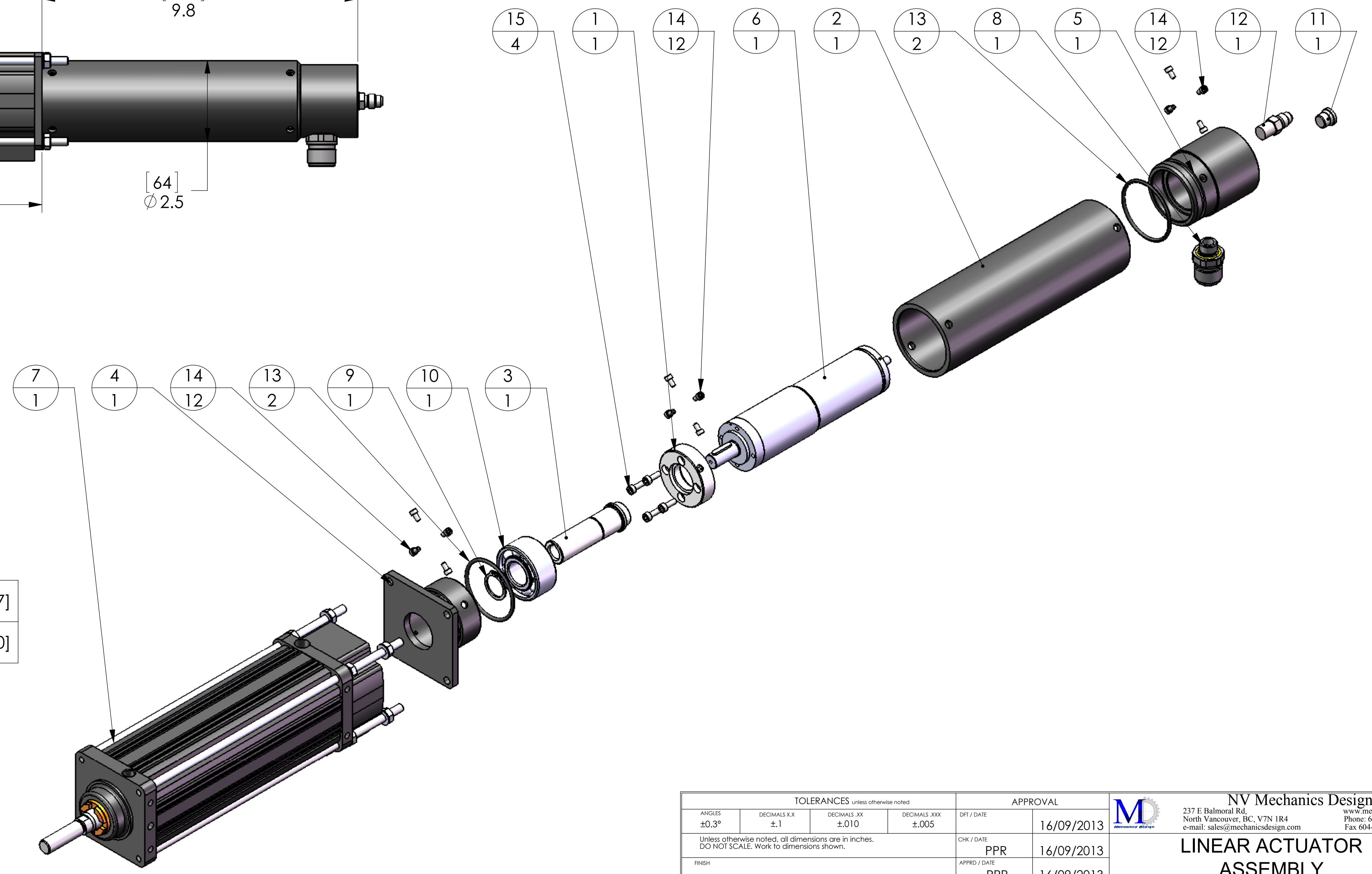
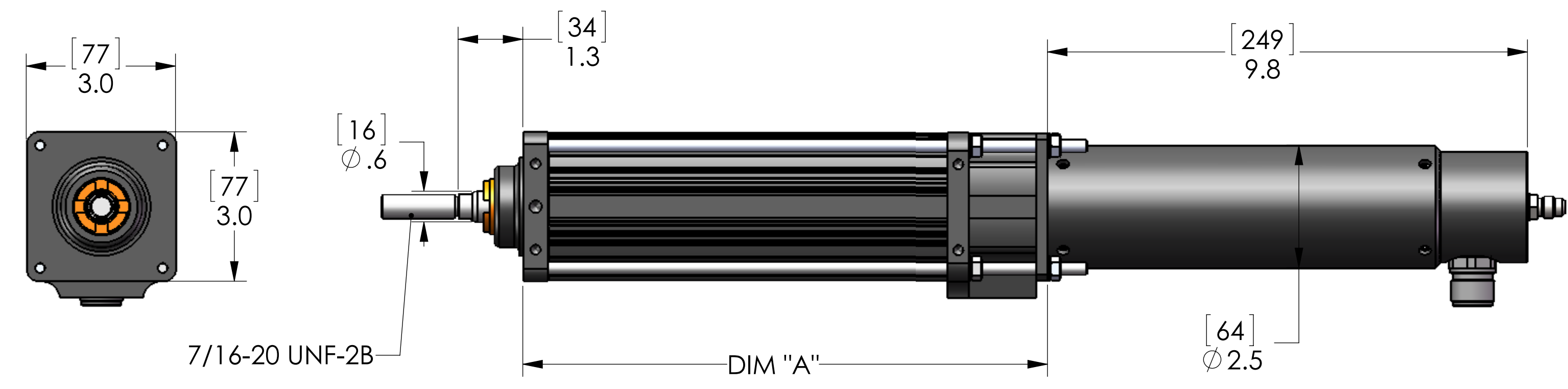


ROTARY ACTUATOR	
MOTOR TYPE	BRUSHLESS MOTOR
NOMINAL VOLTAGE	15V, 24V, 42V, 48V AVAILABLE
NOMINAL TORQUE (MAX CONTINUOUS TORQUE)	11.1 ft. lbf [15.0 Nm]
MAX CONTINUOUS CURRENT	11.8A to 3.68A (varying voltage input)
MAX OUTPUT SHAFT STROKE/SPEED/THRUST FORCE	AVAILABLE UPON REQUEST
DIAMETER	SEE INFO BELOW
LENGTH	SEE INFO BELOW
STROKE	SEE INFO BELOW
CONNECTOR	MHDG MINATURE HIGH DENSITY CONNECTOR

BILL OF MATERIALS						
ITEM #	QTY	UOM	PART NUMBER	DESCRIPTION	MATERIAL DESCRIPTION	Vendor
1	1	EA	MD-LAC13-10001-0	MOSTOR MOUNT PLATE	17-4 PH SST H1 150	
2	1	EA	MD-LAC13-10002-0	TUBE	DUPLEX SST	
3	1	EA	MD-LAC13-10003-0	CONNECTING SHAFT	SST 17-4 PH COND H1 150	
4	1	EA	MD-LAC13-10004-0	TOP HUB	SST 316	
5	1	EA	MD-LAC13-10005-0	REAR END CAP	DUPLEX SST	

BRAKE, ROTARY/LINEAR POSITION SENSOR OPTIONS AVAILABLE UPON REQUEST



STROKE	3.0 [76]	6.0 [152]	10.0 [254]	12.0 [305]	14.0 [355]	18.0 [457]
DIM A	8.2 [209]	10.7 [272]	15.2 [387]	17.2 [437]	19.2 [488]	23.2 [590]

- NOTES:
- CHECK O-RINGS FOR CUTS, NICKS, ETC. (APPLY THIN FILM OF O-RING GREASE) THROW AWAY WHEN IN DOUBT
  - ALL FASTENERS WITH LOCKNUT, LOCK WASHER APPLY WITH TEF-GEL, NEVER-SEEZ MARINERS OR AQUA LUBE
  - ALL OTHER FASTENERS INSTALL WITH MEDIUM STRENGTH LOCTITE 243 (BLUE)
  - TORQUE ALL FASTENERS TO xx FT\*LBF (FOLLOW TORQUE TABLE)

REVISIONS				
ZONE	REV.	DESCRIPTION	DATE	APPROVED

TOLERANCES unless otherwise noted				APPROVAL	
ANGLES ±0.3°	DECIMALS .XX ±.1	DECIMALS .XXX ±.010	DECIMALS .XXXX ±.005	CHK / DATE	16/09/2013
Unless otherwise noted, all dimensions are in inches. DO NOT SCALE. Work to dimensions shown.				PPR	16/09/2013
FINISH				APPRO / DATE	PPR 16/09/2013
INTERPRET PER ANSI Y14.3 AND ANSI Y14.5M		DWG FILE NAME MD-LAC13-11000-1.SLDDRW			
This document contains confidential information. All rights are owned by NV Mechanics Design Ltd. No use or disclosure is to be made without the written permission of NV Mechanics Design Ltd.					

**NV Mechanics Design Ltd.**  
 www.mechanicsdesign.com  
 237 E Balmoral Rd.  
 North Vancouver, BC, V7N 1R4  
 Phone: 604-250-3375  
 e-mail: sales@mechanicsdesign.com  
 Fax: 604-525-5570

**LINEAR ACTUATOR ASSEMBLY LAC13**

SIZE: D DWG. NO.: MD-LAC13-11000-1  
 SCALE: WEIGHT: 10.87 LBS SHEET: 1 OF 1